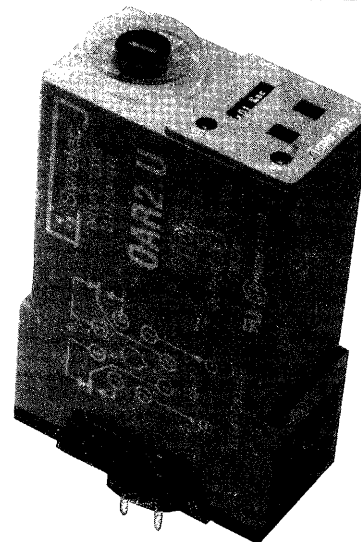


# AR2 U SERIES

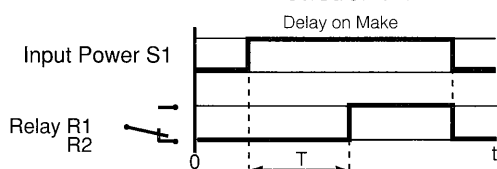
## DELAY ON MAKE TIMER

UL-E87133 CSA-LR56339

- Multi Timing Range (.1 sec. to 10 hours)
- Direct Reading
- Dual Voltage
- DPDT 10 Amp Relay Output
- LED Power On Indicator
- LED Relay Indicator



Function A:

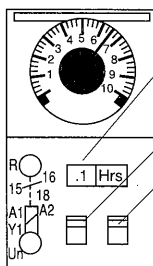


When input power (S1) is applied, the relay delays the present time period (T) prior to energizing. Interrupt power to de-energize the relay.

**SPECIFICATIONS:**

<b>Input Power</b> .....	220VAC/24 VAC/DC, 110VAC/24 VAC/DC	
	48VAC/DC/24 VAC/DC, 12 VDC ± 15%	
	50/60 Hz	
<b>Max. power consumption</b>	24 VAC: 1 VA	12 VDC: 0.5W
	48 VAC: 1.2 VA	24 VDC: 0.6W
	110 VAC: 3.5VA	48 VDC: 1.2W
	220 VAC: 7 VA	
<b>Output</b> .....	DPDT Relay	
<b>Contact Material</b> .....	Ag Cdo	
<b>Maximum loading</b> .....	10A AC resistive	8A DC resistive
<b>Max. switching voltage</b> ..	250 VAC	250VDC
<b>Relay max. power rating</b> ..	2200 VA	80W
<b>Transient protection</b> .. .	2500VA	
<b>Mechanical Life of Relay</b> ..	30 x 10 <sup>5</sup> operations	
<b>Electrical Life of Relay</b> ..	2 x 10 <sup>5</sup> at 2400 VA resistive load	
<b>Repetition accuracy</b> .....	± 0.2% at constant ambient	
<b>Reset time</b> .....	50ms after timing	
	100ms during timing	
<b>Operating temperature</b> ..	-4°F to + 140°F	-20°C to +60°C
<b>Weight</b> .....	2.8 oz. (80 grams)	

**TIME RANGE SELECTION:**

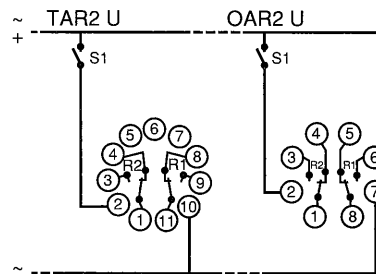


Time Base Readout  
 Scale Selection Switch X1 or X0.1  
 Time Base Selections Hour, Minute, Second

Six Time Ranges can be selected with two front panel switches.

X 0.1 s	- 0.1 to 1 second
X 1s	- 1 to 10 seconds
X 0.1 mn	- 0.1 to 1 minute
X 1 mn	- 1 to 10 minutes
X 0.1 hrs	- 0.1 to 1 hour
X 1 hrs	- 1 to 10 hours

**WIRING DIAGRAM:**



The OAR2 U is a single voltage timer. The TAR2 U is a dual voltage timer. (Jumper 7 & 10 for 24 VAC/DC).

**ORDERING INFORMATION:**

